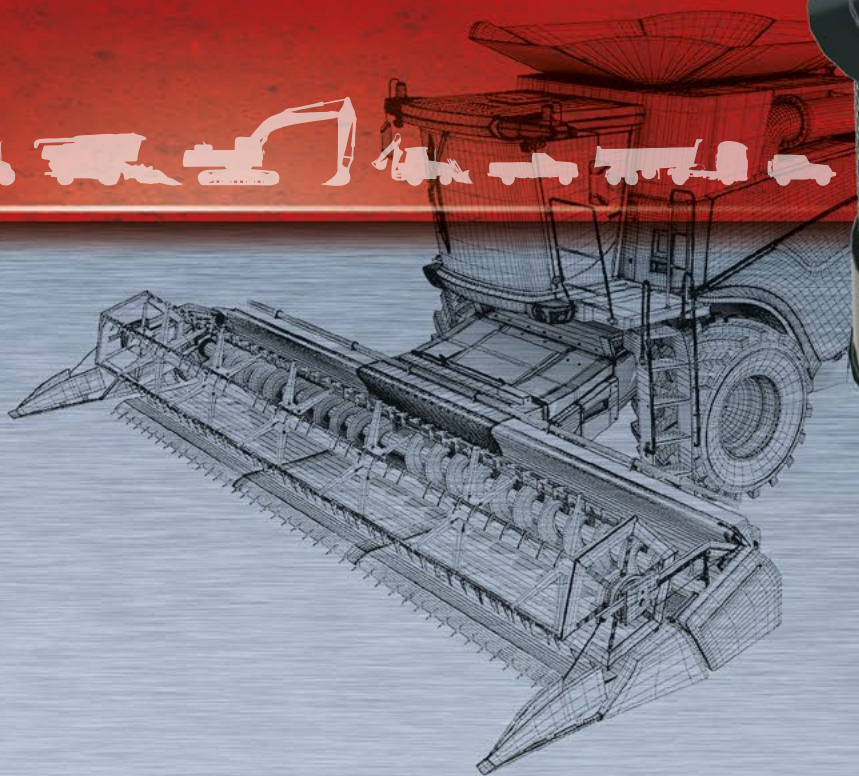




o'cuatro

advanced filtration technology



Truck



DYNAMIC ENGINE AIR PRE-CLEANERS

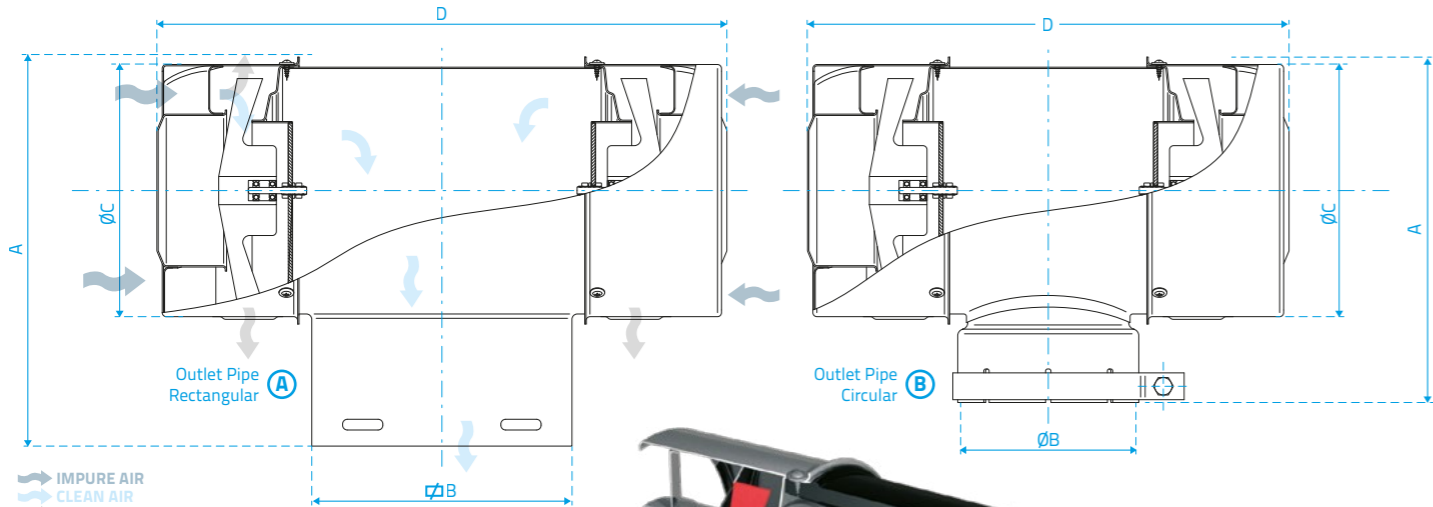
TRUCK SERIES

8,0 to 27,0 ^{m³/min.}

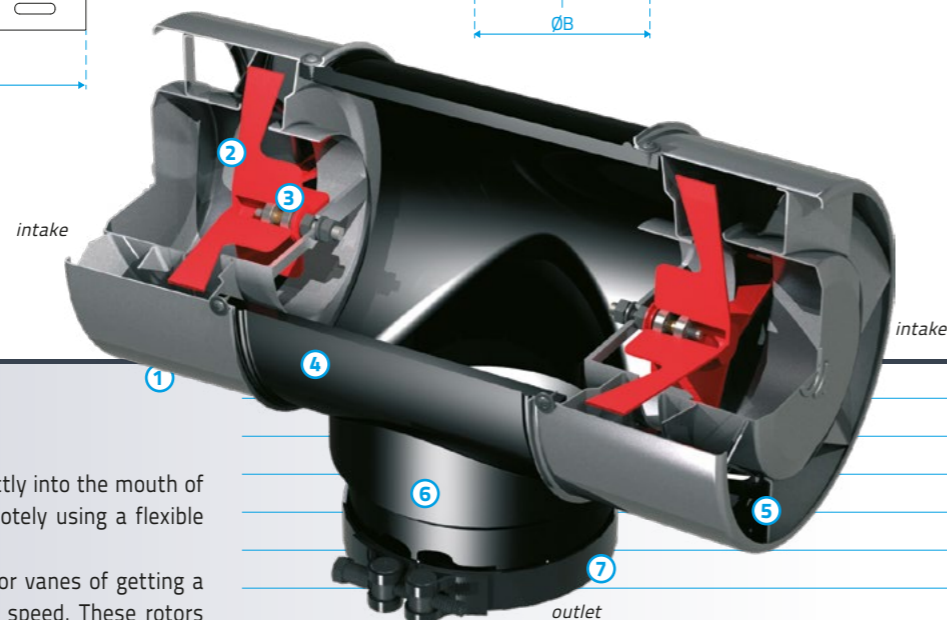
These Air Precleaners consist of a steel housing or hybrid (metal + plastic), with static vanes and a rust-proof rotor mounted on dual ball bearings over double-welded plate steel. The outlet tube can be connected to metal ducting using the supplied reduction sleeves or to a flexible hose connection. O'CUATRO Engine Air Precleaners are powder coated for a durable, corrosion-resistant finish.

MODEL	AIRFLOW RANGE m³/min (CFM) (1)	HORSEPOWER RANGE HP (Kw) (2)	WEIGHT Kg. (Lbs.)	Dimensions				
				A mm (") (3)	ØB mm (") (4)	ØB mm (")	ØC mm (")	D mm (")
FU 150 T	< 15 (529)	< 200 (150)	3,40 (7.50)	260 (10.2)	102 (4.0)	-	196 (7.8)	340 (13.4)
FU 200	< 17 (600)	< 250 (185)	3,50 (7.70)	290; 422 (11.4; 16.6)	-	100 x 194 (3.9 x 7.6)	198 (7.8)	425 (16.7)
FU 200VW	< 17 (600)	< 250 (185)	3,50 (7.70)	230 (9.1)	-	80 x 220 (3.2 x 8.7)	196 (7.8)	430 (16.9)
FU 270	< 17 (600)	< 250 (185)	4,25 (9.40)	256 (10.1)	152 (6.0)	-	198 (7.8)	400 (15.7)
FU 270M	< 17 (600)	< 250 (185)	4,25 (9.40)	258 (10.1)	133 (5.25)	-	198 (7.8)	360 (14.1)
SC 112C	< 27 (953)	< 350 (261)	5,80 (12.80)	345 (13.6)	-	110 x 294 (4.33 x 11.5)	235 (9.3)	550 (21.7)
PN 350	< 27 (953)	< 350 (261)	5,20 (11.50)	360; 290 (14.2; 11.4)	152; 203 (6.0; 8.0)	-	235 (9.3)	465 (18.3)

(1) In turbocharged or turbo-aftercooled engines the correct model selection is based on the maximum air flow. (2) In normally aspirated engines the model selection by horsepower range is just a recommendation. (3) The height "A" varies ØB. The value given is the tallest team in each family. (4) The diameters ØB (Outlet Size) are the standard inside diameters. From these the outlet tube can be adapted with reducing sleeves for a variety of smaller outlet choices. These sleeves are provided from Ø 7" to Ø 2.5" generally in 1/4" or 1/2" steps. O'CUATRO s.a. has the right to modify the information contained in this brochure without its previous advise.



Occasionally check that no foreign material to block the air intake areas, or discharge of particles.



HOW THEY WORK

This type of Air Precleaners can be installed directly into the mouth of the housing revenue porta filter element or remotely using a flexible rubber hose and accessories.

Air enters the prefilter o'cuatro through the stator vanes of getting a sense of rotation that drives the rotors at high speed. These rotors separated by centrifugal force contaminants (dust, dirt, insects, rainwater, snow, etc.), since being heavier than air are expelled through discharge slots on one side of the team. This Only purified air flows to the filter elements.

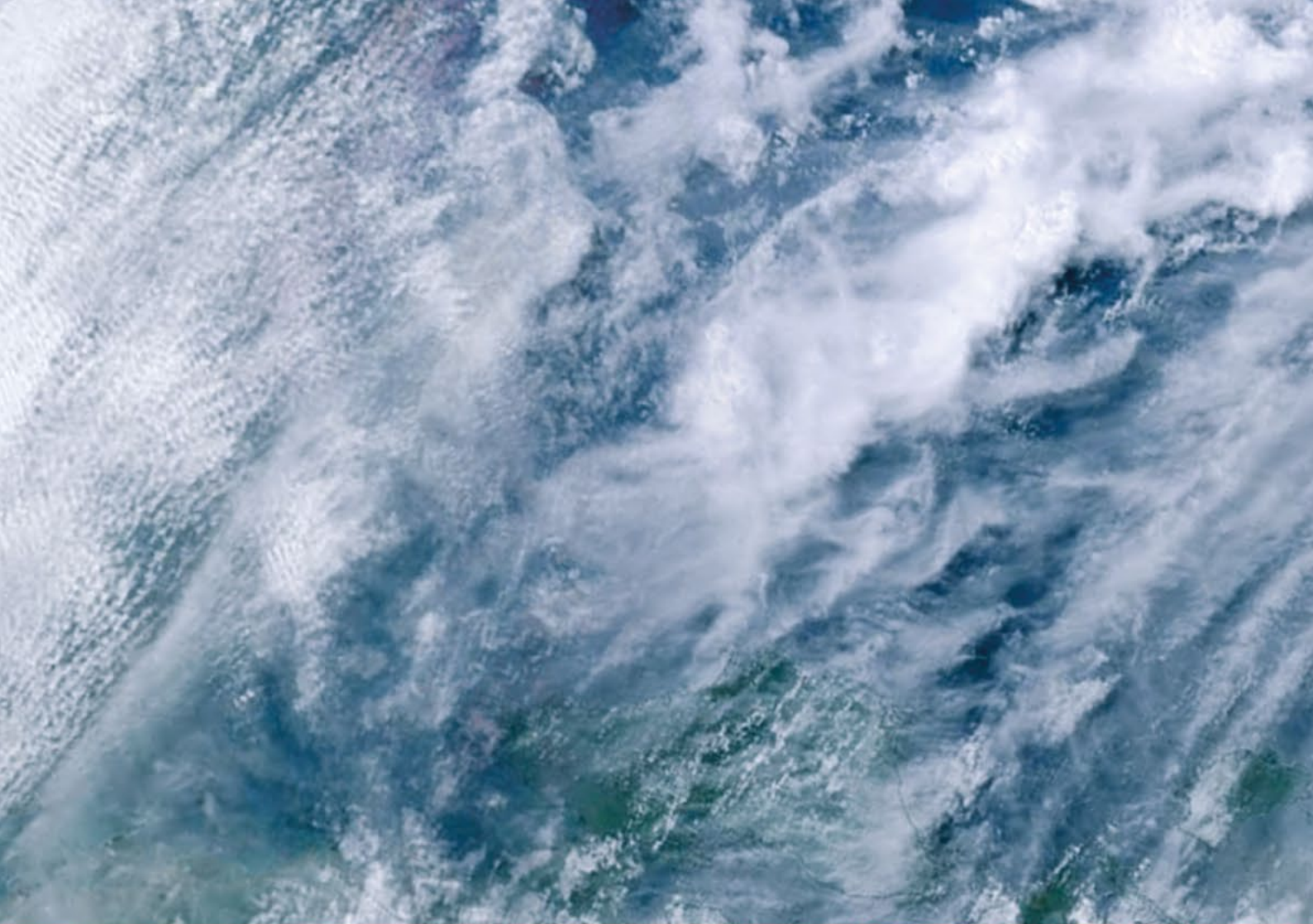
- 1. Discharge Ports
- 2. Rotor (spinner) (2)
- 3. Two Ball Bearings
- 4. Housing
- 5. Static Vanes
- 6. Outlet Pipe (to air cleaner)
- 7. Clamp

APPLICATIONS

The Air Dynamic Precleaners o'cuatro are specially designed to be directly or remotely connected to the mouth of the housing revenue porta filter elements diesel engines, gasoline or compressed natural gas (CNG) trucks..



<p>90%</p> <p>EFFICIENCY Removes up to 90% of impurities (dust, snow, rain, etc.) Before they reach the air filter.</p>	<p>10x</p> <p>AIR FILTER Extend engine air filter life up to 10 times.</p>	<p>50%</p> <p>LESS MAINTENANCE Reduce down time by up to 50%.</p>	<p>MORE SHELF LIFE Prolong engine and turbocharger life.</p>	<p>-10%</p> <p>SAVING Save up to 10 % on fuel costs.</p>	<p>EASY TO INSTALL Three plastic outlet reduction sleeves are provided with each assembly.</p>	<p>VERSATILITY Wide range of applications and flow rates.</p>
<p>DURABILITY Steel housing, powder coat.</p>	<p>SELF-PROPELLED No required electricity or connection to the exhaust gas power to perform the filtering.</p>	<p>SELF-CLEANING They require virtually no maintenance.</p>	<p>AIR FLOW Large airflow, low values of additional restriction.</p>			



advanced filtration technology

v10.14

OBLANSA



www.ocuatro.com

Sales Office

Ave. López y Planes 4401 (S3000DNJ) Santa Fe, Rep. Argentina
+54 342 4561515 / 4556587/8 - oblan@ocuatro.com

Manufacturing Plant

Highway Santa Fe-Rosario y Route 19 (3016) Santo Tomé, Rep. Argentina
+54 342 4752800 - tecnica@ocuatro.com

