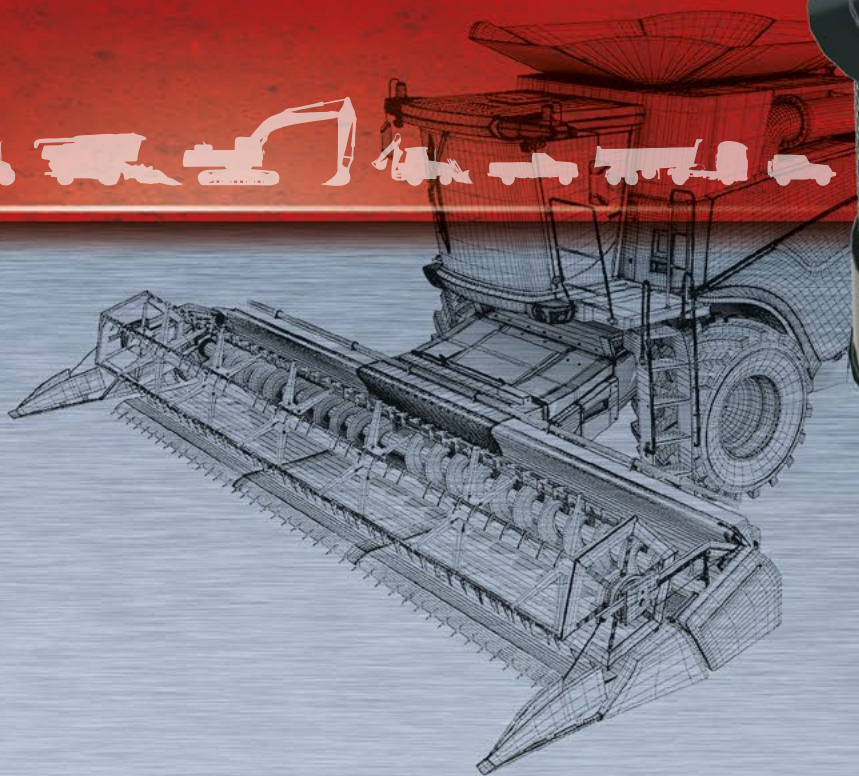




o'cuatro

advanced filtration technology



KC



DYNAMIC ENGINE AIR PRECLEANERS KC SERIES

For Agriculture, Earth Moving Machinery,
Trucks and Stationary Applications.

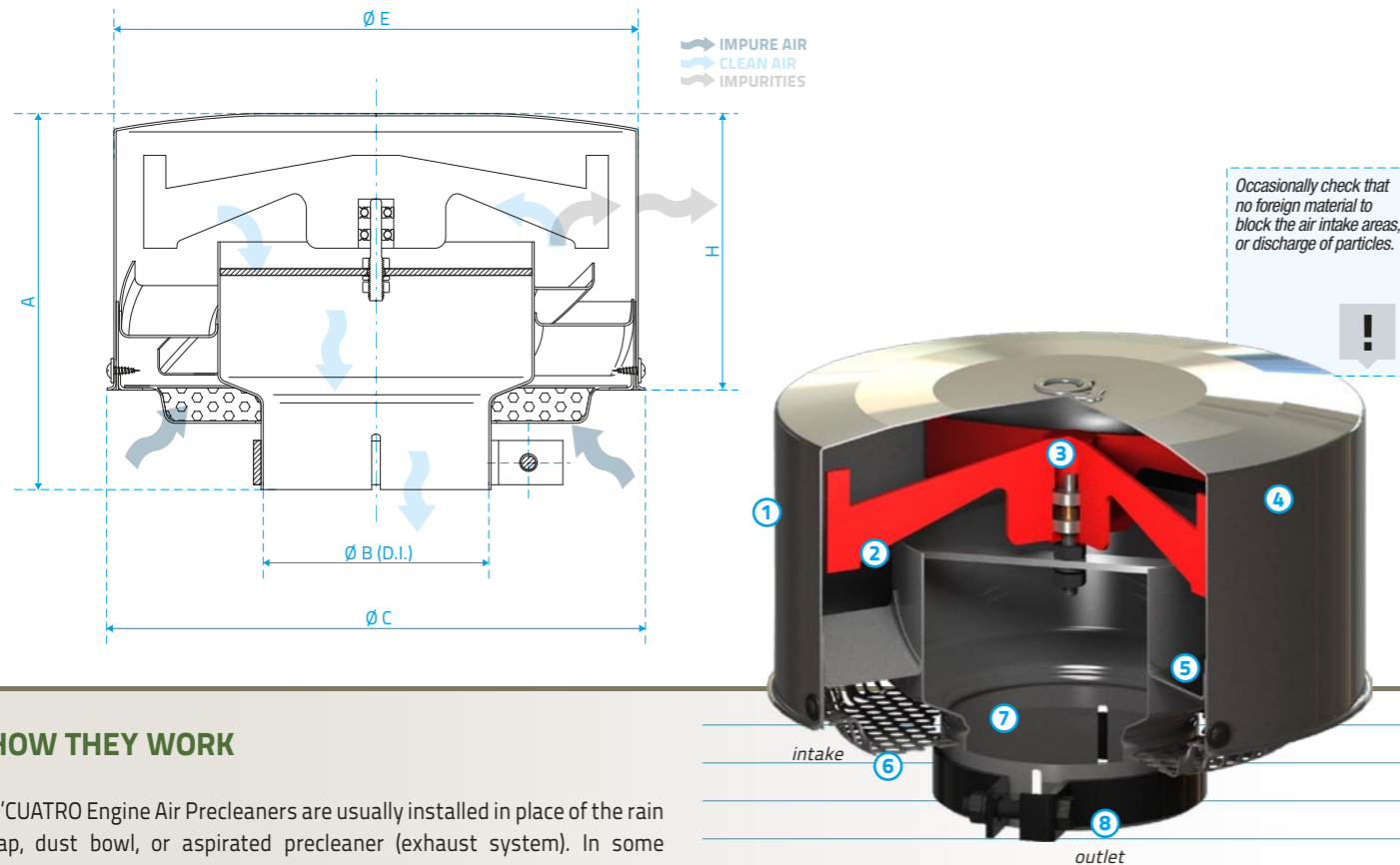
0,6 to 40,0
m³/min.

These Air Precleaners consist of a steel housing with static vanes and a rust-proof rotor mounted on dual ball bearings. The perforated metal pre-screen at the inlet is standard. The outlet tube can be adapted with the supplied reducing sleeves for a variety of outlet choices.

O'CUATRO Engine Air Precleaners are powder coated for a durable, corrosion-resistant finish. Air flows range from 21 to 1411 CFM (0.6 to 40.0 m³/min).

MODEL	AIRFLOW RANGE m ³ /min (CFM)	HORSEPOWER RANGE HP (Kw)	WEIGHT Kg. (Lbs.)	Dimensions				
				A mm (") ⁽³⁾	H mm (")	ØC mm (")	ØE mm (")	ØB Outlet Size. mm (") ⁽⁴⁾
KC 11	0.6 - 1.4 (21 - 50)	10 - 25 (7 - 19)	0.40 (0.90)	94 (3.70)	62 (2.44)	113 (4.45)	108 (4.25)	38 (1.5)
KC 21	1.0 - 1.5 (35 - 53)	15 - 30 (11 - 22)	0.50 (1.10)	102 (4.00)	70 (2.76)	133 (5.25)	124 (4.88)	51 (2)
KC 31	1.5 - 3.5 (53 - 124)	30 - 60 (22 - 45)	1.20 (2.65)	164 (6.46)	106 (4.17)	178 (7)	167 (6.57)	76 (3)
KC 41	3.5 - 7.0 (124 - 247)	60 - 120 (45 - 90)	1.30 (2.87)	162 (6.38)	108 (4.25)	199 (7.83)	187 (7.36)	102; 82 (4; 3.25)
KC 81	7.0 - 11.0 (247 - 388)	120 - 160 (90 - 120)	1.80 (4.00)	174 (6.85)	125 (4.92)	243 (9.56)	233 (9.17)	127; 114; 102; 82 (5; 4.5; 4; 3.25)
KC 91	11.0 - 15.0 (388 - 530)	160 - 220 (120 - 165)	2.40 (5.30)	208 (8.18)	152 (5.98)	273 (10.74)	267 (10.51)	133; 114 (5.25; 4.5)
KC 111	15.0 - 22.0 (530 - 776)	220 - 300 (165 - 225)	2.90 (6.40)	233 (9.17)	154 (6.06)	309 (12.16)	298 (11.73)	178; 152; 133 (7; 6; 5.25)
KC 211	22.0 - 30.0 (776 - 1059)	300 - 400 (225 - 300)	3.40 (7.50)	200 (7.87)	160 (6.30)	359 (14.13)	348 (13.70)	203; 178; 152 (8; 7; 6)
KC 411	30.0 - 40.0 (1059 - 1411)	400 - 550 (300 - 410)	5.20 (11.50)	243 (9.56)	183 (7.20)	440 (17.32)	427 (16.81)	203; 178 (8; 7)

(1) In turbocharged or turbo-aftercooled engines the correct model selection is based on the maximum air flow. (2) In normally aspirated engines the model selection by horsepower range is just a recommendation. (3) The height "A" varies by diameter ØB. The value given is the tallest team in each family. (4) The diameters ØB (Outlet Size) are the standard inside diameters. From these the outlet tube can be adapted with reducing sleeves for a variety of smaller outlet choices. These sleeves are provided from Ø 7" to Ø 2.5" generally in 1/4" or 1/2" steps. O'CUATRO s.a. has the right to modify the information contained in this brochure without its previous advise.



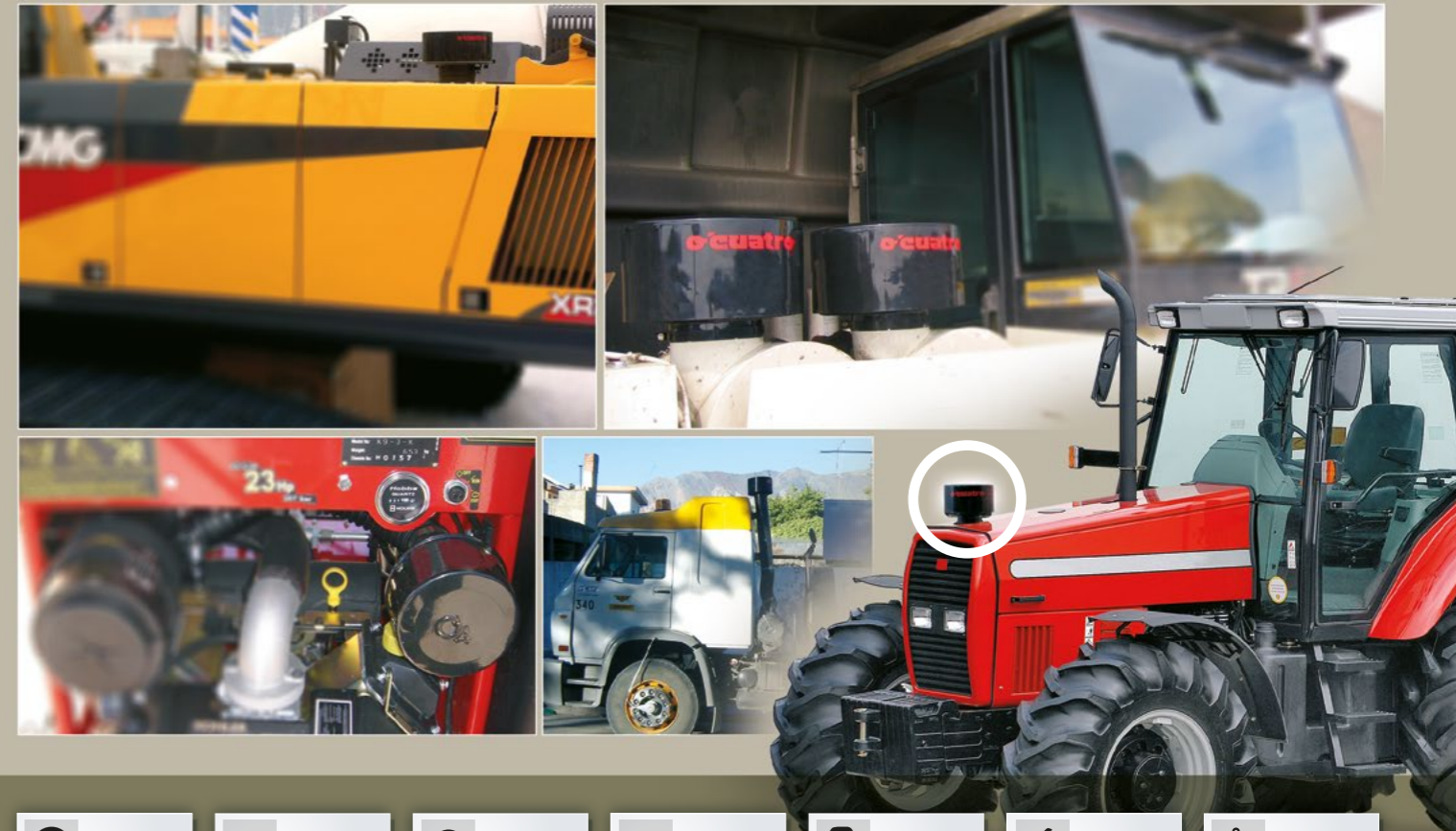
HOW THEY WORK

O'CUATRO Engine Air Precleaners are usually installed in place of the rain cap, dust bowl, or aspirated pre-cleaner (exhaust system). In some applications, they can be mounted directly to the air cleaner. Air enters the system through a pre-screen that removes large debris. It then flows through static vanes causing the air to spin. As the air spins, centrifugal force separates dust, dirt, insects, rain and snow from the air stream. The swirling air drives a high velocity rotor that acts as a blower evacuating contaminants through special discharge ports in the side of the unit. Only purified air flows to the air filter elements.

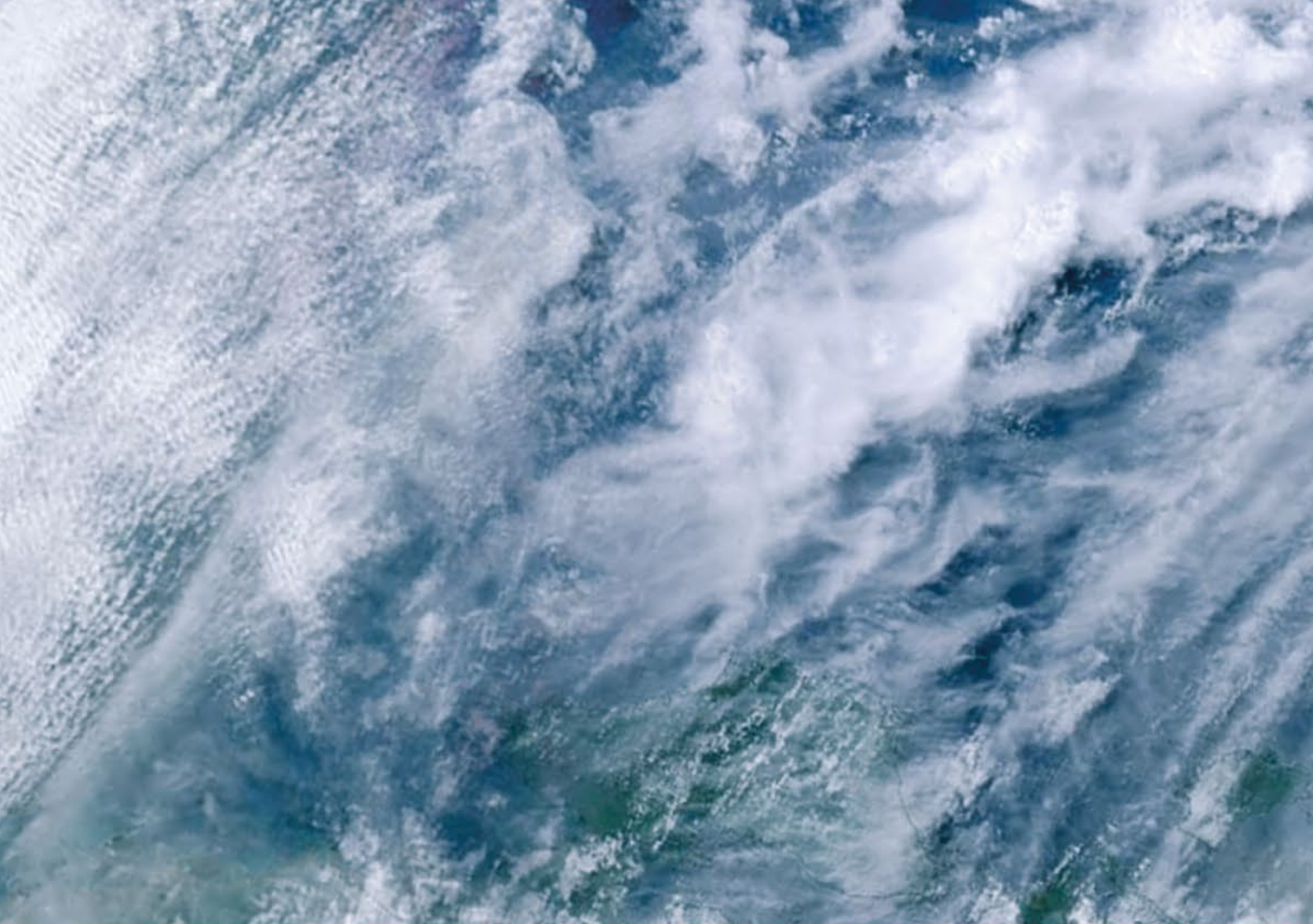
- | | |
|----------------------|---------------------------------|
| 1. Discharge Ports | 6. Screen (air intake) |
| 2. Rotor (Spinner) | 7. Outlet Pipe (to air cleaner) |
| 3. Two Ball Bearings | 8. Clamp |
| 4. Housing | |
| 5. Static Vanes | |

APPLICATIONS

O'CUATRO Engine Air Precleaners are designed to be mounted on or connected to the air filter intake of a gasoline, diesel or compressed gas engine air cleaner. Their applications include all fast-moving mobile equipment such as trucks, buses and recreational vehicles.



<p>90%</p> <p>EFFICIENCY Removes up to 90% of impurities (dust, snow, rain, etc.) Before they reach the air filter.</p>	<p>10x</p> <p>AIR FILTER Extend engine air filter life up to 10 times.</p>	<p>50%</p> <p>LESS MAINTENANCE Reduce down time by up to 50%.</p>	<p>MORE SHELF LIFE Prolong engine and turbocharger life.</p>	<p>-10%</p> <p>SAVING Save up to 10 % on fuel costs.</p>	<p>EASY TO INSTALL Three plastic outlet reduction sleeves are provided with each assembly.</p>	<p>VERSATILITY Wide range of applications and flow rates.</p>
<p>DURABILITY Steel housing, powder coat.</p>	<p>SELF-PROPELLED No required electricity or connection to the exhaust gas power to perform the filtering.</p>	<p>SELF-CLEANING They require virtually no maintenance.</p>	<p>AIR FLOW Large airflow, low values of additional restriction.</p>			



advanced filtration technology

v10.14

OBLANSA



www.ocuatro.com

Sales Office

Ave. López y Planes 4401 (S3000DNJ) Santa Fe, Rep. Argentina
+54 342 4561515 / 4556587/8 - oblan@ocuatro.com

Manufacturing Plant

Highway Santa Fe-Rosario y Route 19 (3016) Santo Tomé, Rep. Argentina
+54 342 4752800 - tecnica@ocuatro.com

